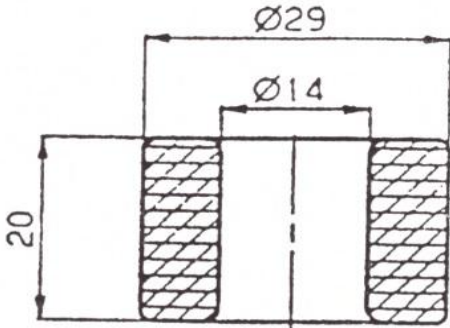
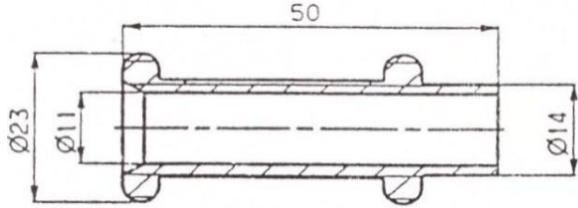
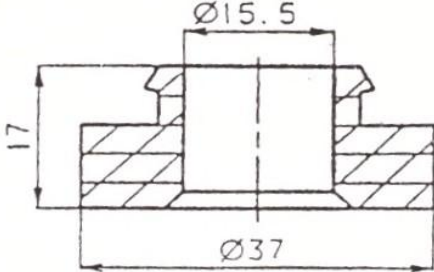
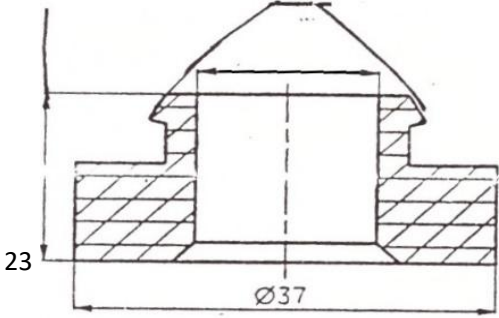
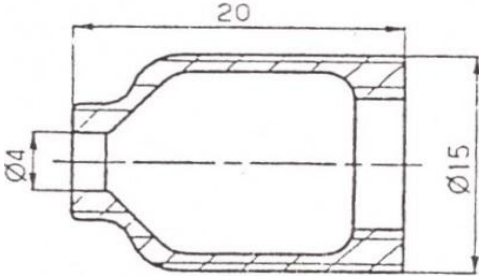
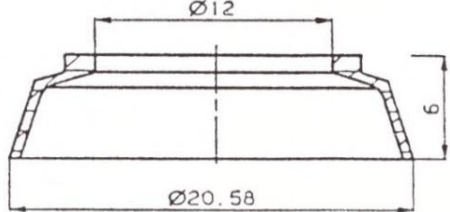
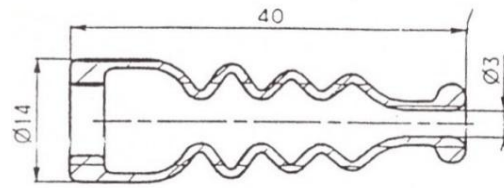


PARTICOLARI VARI PER CAVI FLESSIBILI

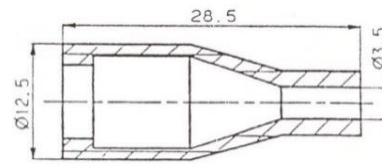
<p>Rif. T1</p>  <p>Technical drawing of component Rif. T1, a cross-section of a cylindrical part. It features a central bore with a diameter of $\varnothing 14$ and an outer diameter of $\varnothing 29$. The total height of the component is 20 units. The central bore is surrounded by a hatched material, likely representing a flexible cable or a specific material layer.</p>	<p>Rif. T2</p>  <p>Technical drawing of component Rif. T2, a cross-section of a cylindrical part. It has a total length of 50 units. The outer diameter is $\varnothing 23$ and the inner diameter is $\varnothing 11$. The component has a central bore with a diameter of $\varnothing 14$ and a hatched material on the outer surface.</p>	<p>Rif. T3</p>  <p>Technical drawing of component Rif. T3, a cross-section of a cylindrical part. It has a total height of 17 units. The outer diameter is $\varnothing 37$ and the inner diameter is $\varnothing 15.5$. The component has a central bore with a diameter of $\varnothing 15.5$ and a hatched material on the outer surface.</p>
<p>Rif. T4</p>  <p>Technical drawing of component Rif. T4, a cross-section of a cylindrical part. It has a total height of 23 units. The outer diameter is $\varnothing 37$. The component has a central bore with a diameter of $\varnothing 37$ and a hatched material on the outer surface.</p>	<p>Rif. T5</p>  <p>Technical drawing of component Rif. T5, a cross-section of a cylindrical part. It has a total length of 20 units. The outer diameter is $\varnothing 15$ and the inner diameter is $\varnothing 4$. The component has a central bore with a diameter of $\varnothing 4$ and a hatched material on the outer surface.</p>	<p>Rif. T6</p>  <p>Technical drawing of component Rif. T6, a cross-section of a cylindrical part. It has a total height of 6 units. The outer diameter is $\varnothing 20.58$ and the inner diameter is $\varnothing 12$. The component has a central bore with a diameter of $\varnothing 12$ and a hatched material on the outer surface.</p>

PARTICOLARI VARI PER CAVI FLESSIBILI

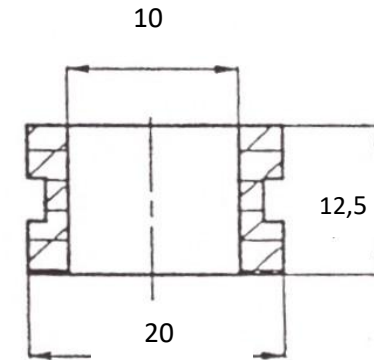
Rif. T9



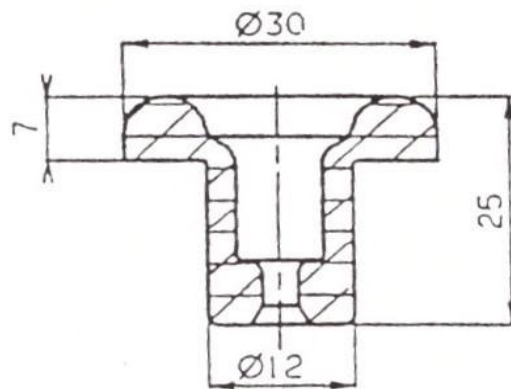
Rif. T10



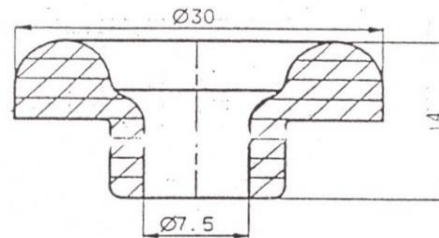
Rif. T13



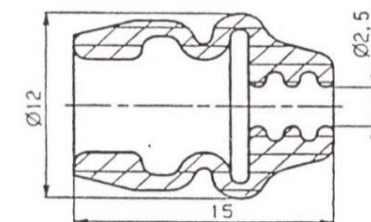
Rif. T15



Rif. T16



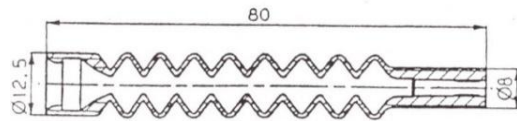
Rif. T17



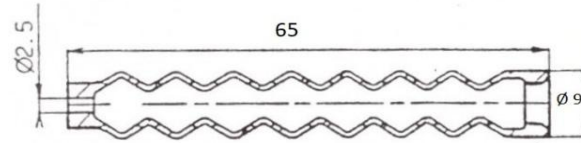
ROBUSTELLI SRL

PARTICOLARI VARI PER CAVI FLESSIBILI

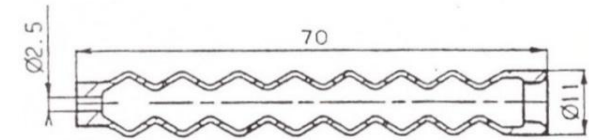
Rif. T18



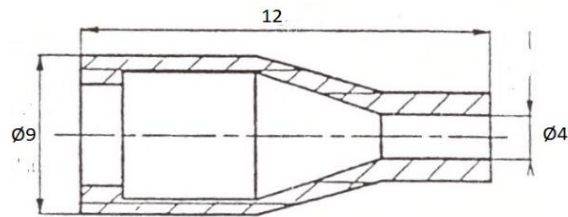
Rif. T19



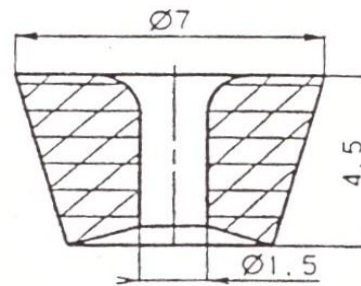
Rif. T20



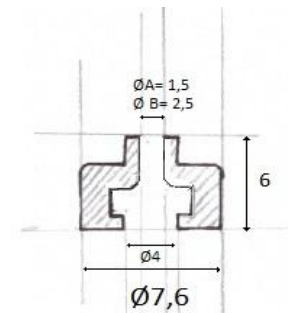
Rif. T21



Rif. T22

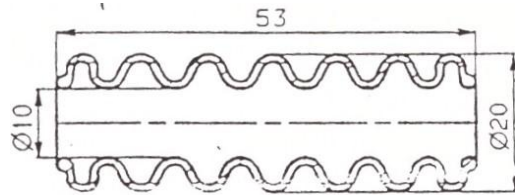


Rif. T23

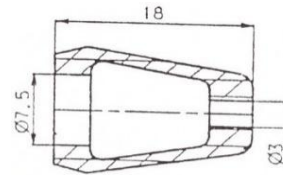


PARTICOLARI VARI PER CAVI FLESSIBILI

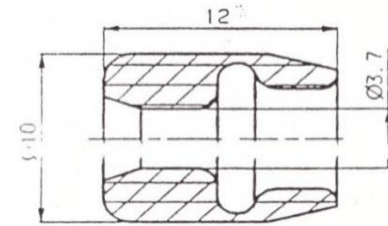
Rif. T24



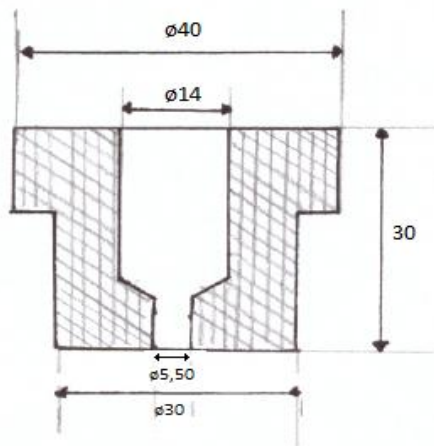
Rif. T25



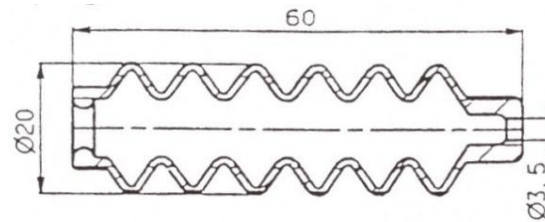
Rif. T26



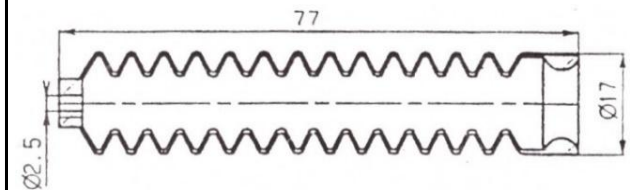
Rif. T28



Rif. T30



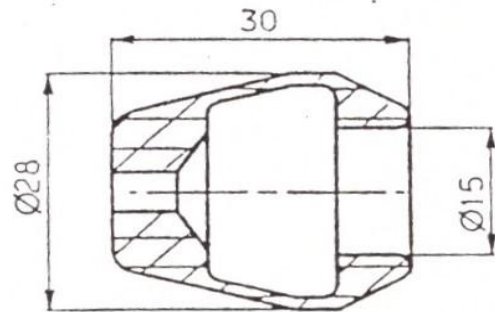
Rif. T31



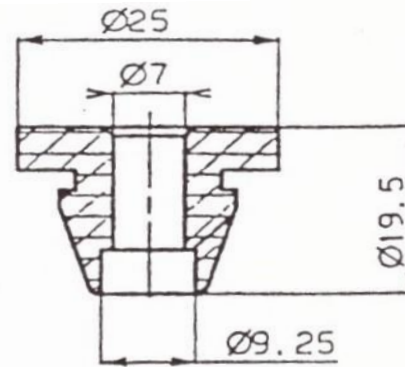
ROBUSTELLI SRL

PARTICOLARI VARI PER CAVI FLESSIBILI

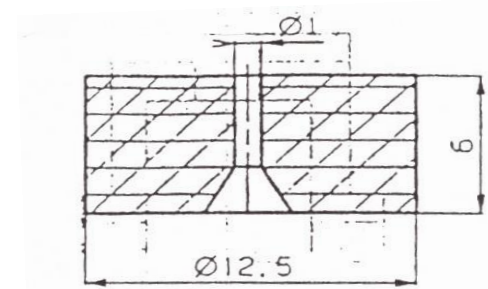
Rif. T32



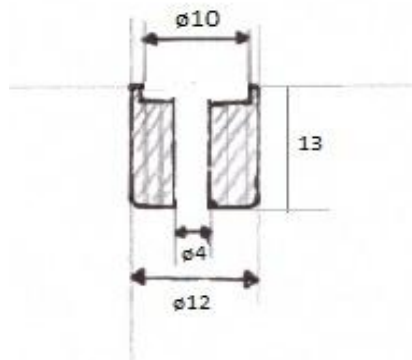
Rif. T34



Rif. T35



Rif. T36



Rif. T37

